

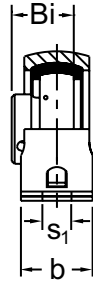
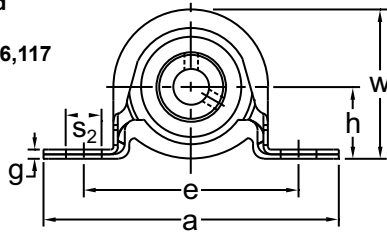


PRESSED STEEL PILLOW BLOCKS

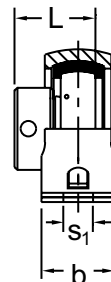
BPR / KHPR 200

NORMAL DUTY

Set-Screw/Eccentric Locking
 Narrow Inner Ring
 Pressed Steel Housing
 Rubber Cushioned
 Non-Relube
 Insert Detail-pg.116,117
 Inch and Metric



BPR 200 Type
Set-Screw Locking



KHPR 200 Type
Eccentric Collar Locking



Shaft Diam. (in.)	AMI Unit # Complete with B Type	List Price	AMI Unit # Complete with KH200 Type	List Price	Dimensions (in.)											Stamping Load Limit (lbs.)	Bolt Size (in.)	Bearing #		Housing #	Rubber Ring #	Weight (lb.)			
					h	a	e		b	s ₁	s ₂	g	w	Bi	L			B	KH						
							Min.	Max.																	
1/2	BPR1-8	34.70	KHPR201-8	36.10	1	4-1/8	2-7/8	3-1/8	1	13/32	1/2	1/8	2-1/16	0.866	1-1/8	350	3/8	B1-8	KH201-8	PP4	R4	0.46			
5/8	BPR2-10		KHPR202-10		1-1/8	4-1/2	3-3/16	3-9/16	1-1/8	13/32	9/16	5/32	2-7/32	0.972	1-7/32	400	3/8	B2-10	KH202-10			0.44			
3/4	BPR4-12		KHPR204-12		37.60	3-3/16	3-9/16	1-1/8	13/32	9/16	5/32	2-7/32	0.972	1-7/32	400	3/8	B4-12	KH204-12	PP5			R5	0.53		
7/8	BPR5-14	41.80	KHPR205-14	41.80	1-5/16	4-7/8	3-9/16	3-15/16	1-1/4	13/32	9/16	5/32	2-5/8	1.063	1-7/32	600	3/8	B5-14	KH205-14	PP6	R6	0.77			
15/16	BPR5-15		KHPR205-15		1-9/16	5-3/4	4	4-1/2	1-5/16	17/32	3/4	3/16	3-1/8	1.193	1-13/32	800	1/2	B5-15	KH205-15						
1	BPR5-16		KHPR205-16		56.70	1-9/16	5-3/4	4	4-1/2	1-5/16	17/32	3/4	3/16	3-1/8	1.193	1-13/32	800	1/2	B5-16				KH205-16		
1-1/16	BPR6-17	51.85	—	56.70	1-9/16	5-3/4	4	4-1/2	1-5/16	17/32	3/4	3/16	3-1/8	1.193	1-13/32	800	1/2	B6-17	—	PP7	R7	1.17			
1-1/8	BPR6-18		KHPR206-18		1-9/16	5-3/4	4	4-1/2	1-5/16	17/32	3/4	3/16	3-1/8	1.193	1-13/32	800	1/2	B6-18	KH206-18						
1-3/16	BPR6-19		KHPR206-19		1-9/16	5-3/4	4	4-1/2	1-5/16	17/32	3/4	3/16	3-1/8	1.193	1-13/32	800	1/2	B6-19	KH206-19						
1-1/4	BPR6-20		KHPR206-20		1-9/16	5-3/4	4	4-1/2	1-5/16	17/32	3/4	3/16	3-1/8	1.193	1-13/32	800	1/2	B6-20	KH206-20						
Dimensions (mm)																									
12	BPR1	37.80	KHPR201	36.10	25.4	104.8	73	79	25.4	10.3	12.7	3.2	52.4	22	28.6	350	M10	B1	KH201	PP4	R4	0.47			
15	BPR2		KHPR202		33.3	123.8	91	100	31.8	10.3	14.3	4	66.7	27	31	600	M10	B2	KH202			0.45			
17	BPR3		KHPR203		39.60	114.3	81	91	28.6	10.3	14.3	4	56.4	24.7	31	400	M10	B3	KH203			0.42			
20	BPR4	39.00	KHPR204	39.60	28.6	114.3	81	91	28.6	10.3	14.3	4	56.4	24.7	31	400	M10	B4	KH204	PP5	R5	0.54			
25	BPR5		KHPR205		33.3	123.8	91	100	31.8	10.3	14.3	4	66.7	27	31	600	M10	B5	KH205				PP6	R6	0.78
30	BPR6		KHPR206		39.7	146.1	102	114	33.3	13.5	19.1	4.6	79.4	30.3	35.7	800	M12	B6	KH206				PP7	R7	1.18

INTERCHANGES: SSRPS ASRPP SSRPE RPB SR-FM AELRPP LRP